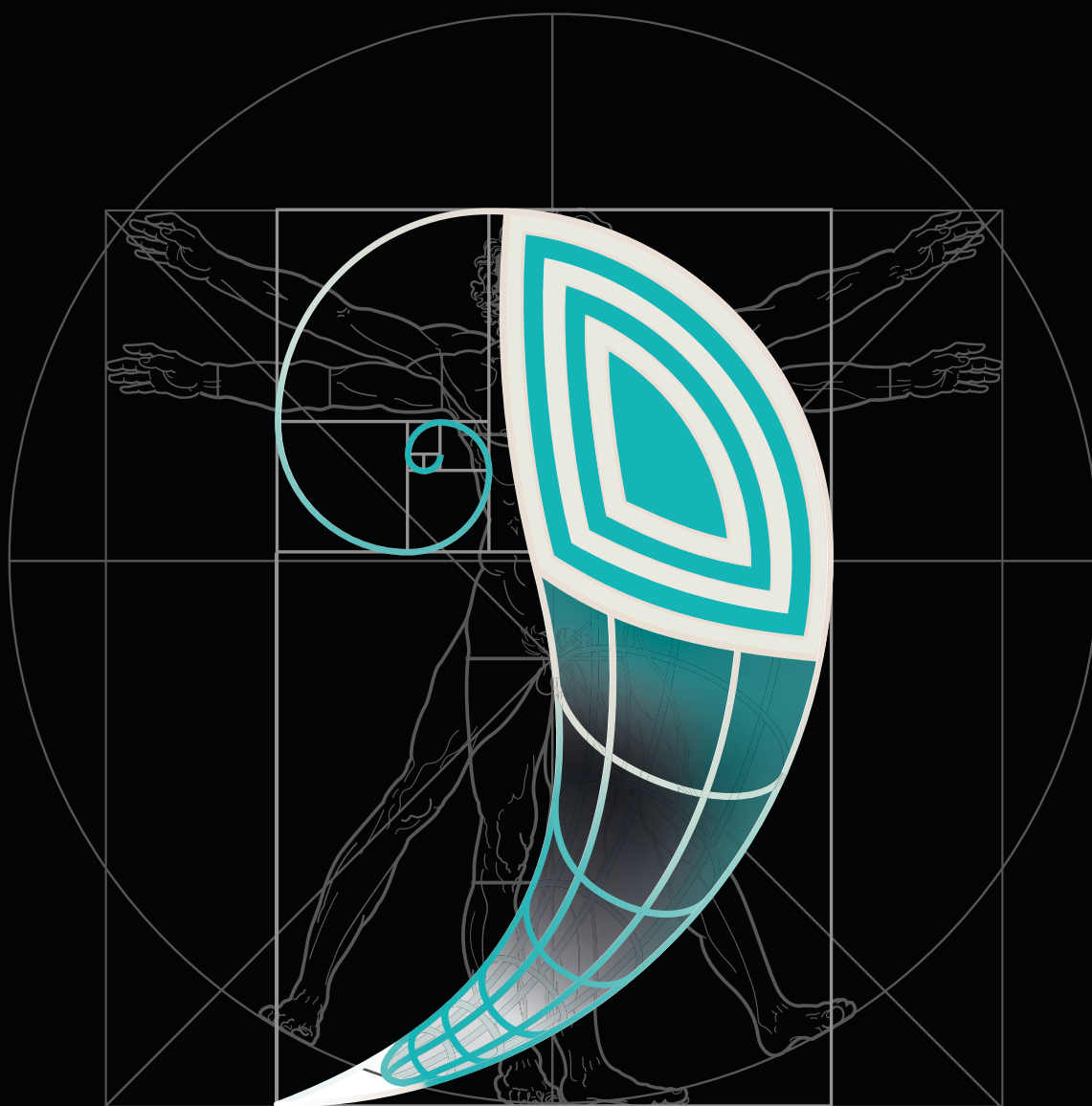


ZIRCONIA CAD/CAM DISK



State-of-the-art
in dental laboratories

3D PRO



Seamless transition in 3 dimensions:

Natural color transition matches the natural color gradient of the tooth from cervical to incisal.
Translucency from 43% incisal to 57% cervical
Strength gradient from 700 Mpa to greater than 1060 Mpa

Recommended applications

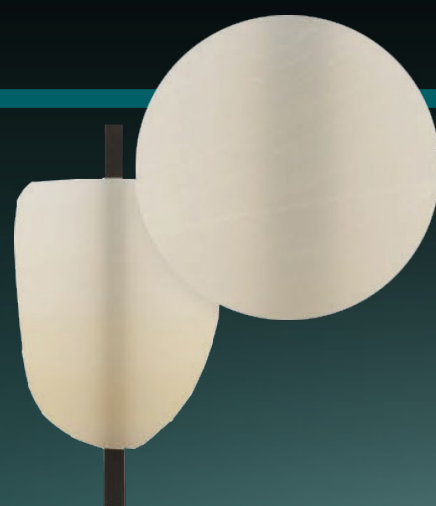
- Veneer
- Inlay & onlay
- Full anatomy crowns (anterior/posterior)
- Anatomically reduced crowns
- 3-unit bridge

Technical Data

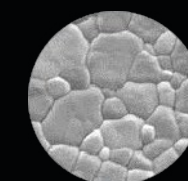
Properties	Parameter
Flexural strength (3-point)	700-1060Mpa
Translucency	43%-57%
Coefficient of thermal expansion	$(10.2 \pm 0.5) \times 10^{-6} \text{ K}^{-1}$
Chemical solubility	$< 100 \mu\text{g} \cdot \text{cm}^{-2}$
Water solubility	1250 HV10

Recommended applications

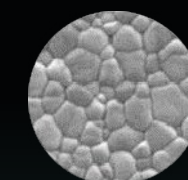
A1 - A2 - A3 - A3.5 - A4
B1 - B2 - B3 - B4
C1 - C2 - C3 - C4 -
D2 - D3 - D4
BL1 - BL2 - BL3



5Y-Highly translucent conditioned oxide-ceramic in the incisal area



4Y-Strong conditioned oxide-ceramic in the cervical area



20%	Incisal zone
15%	
15%	Transition zone
15%	
20%	Cervical zone



MHT ZIRCONIA BLOCK



- With the flexural strength of over 900MPa, virtually all types of indications can be realized.
- The nice color gradient is a perfect imitation of natural tooth.
- Simplify the staining process in dental laboratory routines.

Recommended applications

- Veneers
- Inlays & Onlays
- Full anatomy crowns
- Anatomically reduced crowns
- 3-unit to multi-unit bridge
- 3-unit to multi-unit bridge frameworks

Technical Data

Properties	Parameter
Flexural strength (3-point)	1100Mpa
Translucency	46%
Coefficient of thermal expansion	$(10.5 \pm 0.5) \times 10^{-6} \text{ K}^{-1}$
Chemical solubility	$< 100 \mu\text{g} \cdot \text{cm}^{-2}$
Water solubility	1250 HV10

HT ZIRCONIA BLOCK



- Reproduce shades perfectly, ensuring the accuracy of color.
- Well-balanced combination of translucency and mechanical properties.
- Wide applications from crowns to bridges.

Recommended applications

- Full anatomy crowns
- Anatomically reduced crowns
- 3-unit to multi-unit bridge
- 3-unit to multi-unit bridge frameworks
- Customized abutment
- Full-arch bridge

Technical Data

Properties	Parameter
Flexural strength (3-point)	1100Mpa
Translucency	43%
Coefficient of thermal expansion	$(10.5 \pm 0.5) \times 10^{-6} \text{ K}^{-1}$
Chemical solubility	$< 100 \mu\text{g} \cdot \text{cm}^{-2}$
Water solubility	1250 HV10

AT ZIRCONIA BLOCK



- Extremely high translucent for anterior restorations.
- High aesthetics.

Recommended applications

- Veneers
- Anterior crowns
- Anterior dental bridge (less than 3 units)

Technical Data

Properties	Parameter
Flexural strength (3-point)	700Mpa
Translucency	49%
Coefficient of thermal expansion	$(10.0 \pm 0.5) \times 10^{-6} \text{ K}^{-1}$
Chemical solubility	$< 100 \mu\text{g} \cdot \text{cm}^{-2}$
Water solubility	1250 HV10

HS ZIRCONIA BLOCK



- Highest strength up to 1200Mpa.
- Good fracture resistance.
- Mills and polishes easily.

Recommended applications

- coping & abutment
- 3-unit to multi-unit bridge
- 3-unit to multi-unit bridge framework

Technical Data

Properties	Parameter
Flexural strength (3-point)	1200Mpa
Translucency	40%
Coefficient of thermal expansion	$(10.5 \pm 0.5) \times 10^{-6} \text{ K}^{-1}$
Chemical solubility	$< 100 \mu\text{g} \cdot \text{cm}^{-2}$
Water solubility	1250 HV10

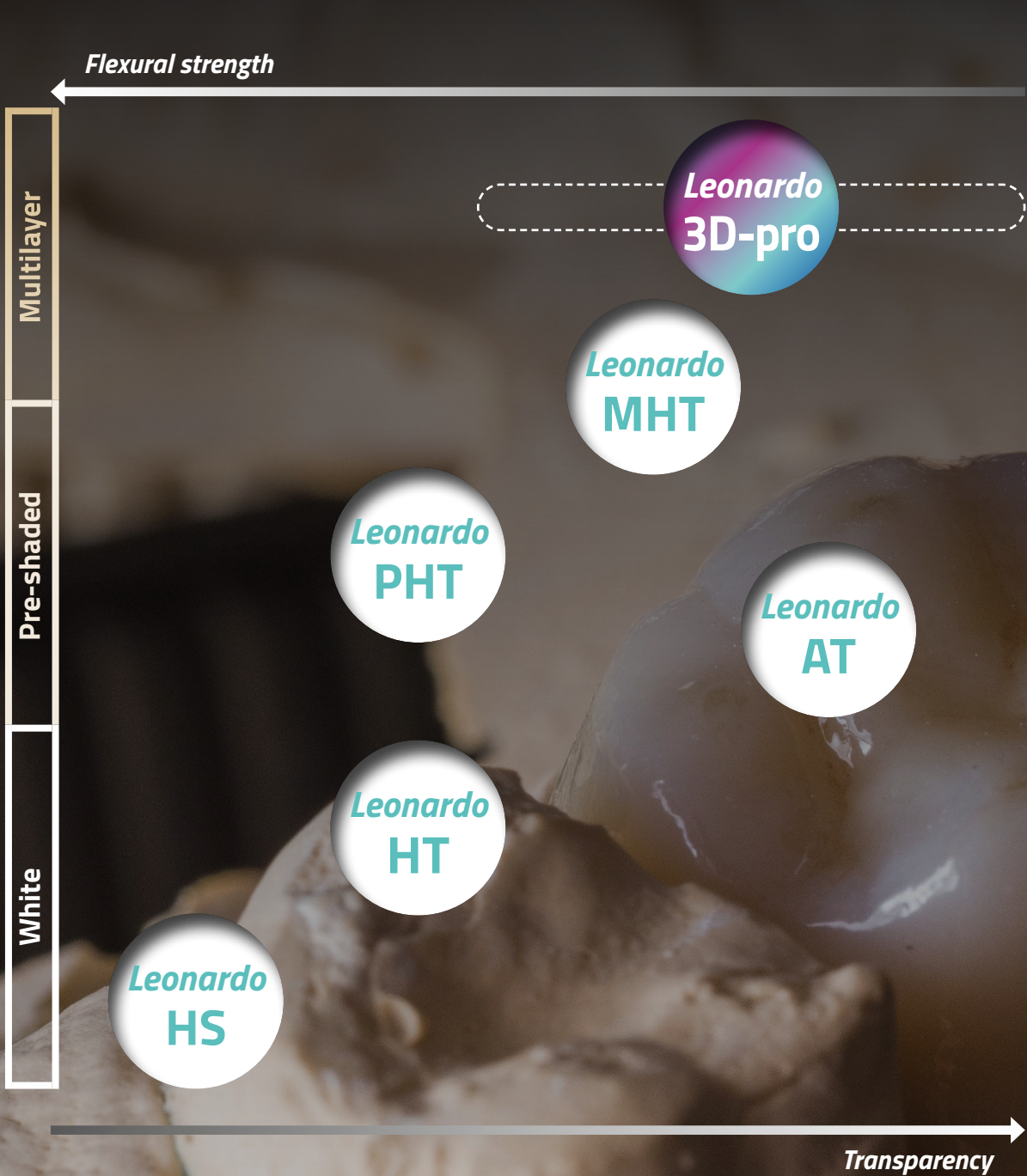
Zirconia Family

For ALL Indications

Leonardo Zirconia Blocks are a high-performance dental material for making crowns and bridges. It is durable, strong and bio-compatible, making it an ideal choice for dental restorations.

Indication overview

Give you a full range of options.



Indications	HS	HT White	HT Pre-shaded	AT	MHT	3D-pro Aesthetics Preferred
Venners	×	×	※	✓	✓	✓
Inlays& onlays	※	※	※	※	✓	✓
Coping& abutment	✓	✓	✓	×	✓	✓
Anatomically reduced crowns	✓	✓	✓	×	✓	✓
Full anatomy anterior crown	×	※	✓	✓	✓	✓
Anterior dental bridge (less than 3 units)	×	※	✓	✓	✓	✓
Full anatomy posterior crown	✓	✓	✓	※	✓	✓
Poterior 3-unit bridge	✓	✓	✓	※	✓	✓
Poterior 3-unit to multi-unit bridge	✓	✓	✓	×	✓	※
Full-arch bridge	✓	✓	✓	×	×	※


Legenda		
✓ available	※ available but not recommended	×
unavailable		

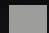
Prime Zirconia Block

Aesthetic and Reliable

Product	HS	HT	MHT	AT	3D-pro
Sample					
Type	3Y-TZP	3Y-TZP	4Y-TZP	5Y-TZP	Incisal: 5Y-TZP Dentin: 4Y-TZP
Bending Strength	1200Mpa	1100Mpa	1000Mpa	700Mpa	Incisal: 700Mpa Dentin: 1050Mpa
Translucency	40%	43%	46%	49%	Incisal: 57% Dentin: 43%
Fracture	≥5	≥5	≥5	≥5	≥5(Dentin)
Shades	White	White A1,A2,A3, A3.5,A4 B1,B2,B3,B4 C1,C2,C3,C4 D2,D3,D4	A1,A2,A3, A3.5,A4 B1,B2,B3,B4 C1,C2,C3,C4 D2,D3,D4	White A1,A2,A3, A3.5,A4 B1,B2,B3,B4 C1,C2,C3,C4 D2,D3,D4	A1,A2,A3, A3.5,A4 B1,B2,B3,B4 C1,C2,C3,C4 D2,D3,D4 BL1,BL2, BL3

Technical data

Flexural Strength(Mpa) 

Translucency(%) 

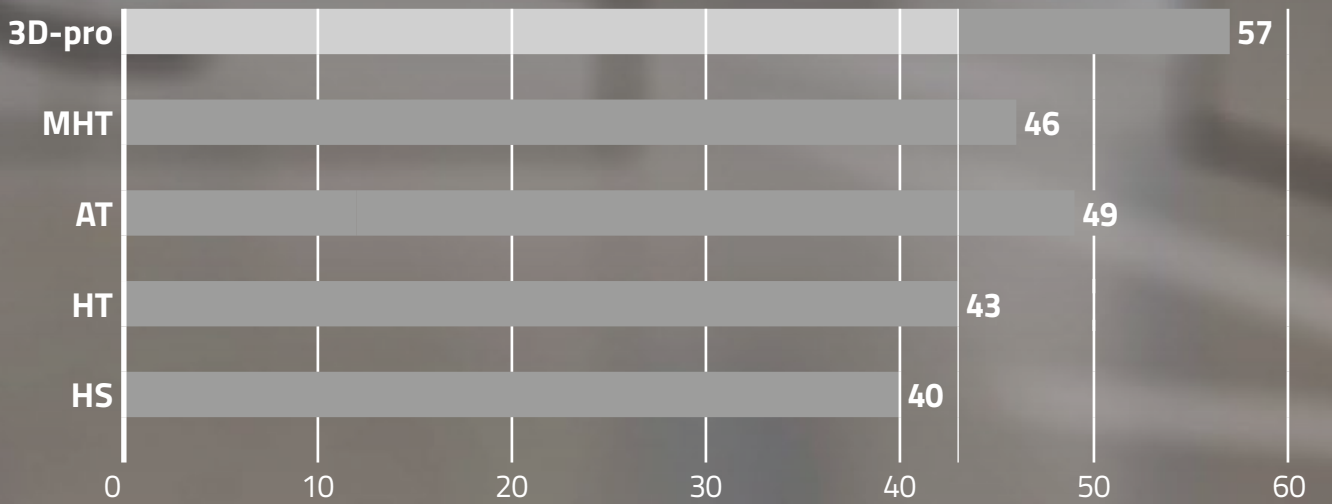
Flexural Strength

Zirconia has a higher flexural strength and therefore better stability during chewing.



Translucency

The higher the translucency, the better the permeability and the more aesthetic the prosthesis is.





Leonardo is a leading manufacturing company with skill and passion devoted to provide advanced solutions to the dental community. We are located in Gorle, Bergamo province, in Northern Italy.

Incorporated with global branches, LEONARDO® is organized into R&D, production, marketing & sales and customer support. Main LEONARDO® products include Acrylic teeth, Dental CAD/CAM Materials and Arch-metal free system. With knowledgeable dental technicians and experienced engineers, our R&D team has developed and released a series of new dental solutions dedicated to the modern dental laboratories.

With all these accomplishments and our endless research and development efforts, we are proud to be your professional partner.

Leonardo Dental Solutions s.r.l

via F. Turati 16/C - 24020 Gorle (BG) - Italy

Tel: +39 035 0390932

e-mail: marketing@leonardodental.com

www.leonardodental.com